

COVID-19 & BAME communities

Discrimination and Workers Rights: An academic discussion on anti-racism and social care.

23rd February 2021



Our Chair



Sophie Chester-Glyn,
Director at Coproduce Care CIC
RM at Manor Community

Our Panellists



David Gillborn,
Professor of Critical Race
Studies,
Director of Research in the
School of Education
Deputy Director of the Centre for
Research in Race and Education
(CRRE) Uni. of Birmingham

Editor-in-chief of the journal Race
Ethnicity and Education,



Hári Sewell,
Director of HS Consultancy.

Specialist Guest Lecturer
(Collaborative Practice, AMHP
Course), University of Bradford.
Hon Senior Research Fellow,
Associate (Citizen and
Community) University of Central
Lancashire

Agenda

- Chair opening comments
- Professor David Gillborn (University of Birmingham)
- Hari Sewell (HS Consultancy)

Note: There will be time for a couple brief questions after each speaker, but please hold general discussion for the joint **Guest Panel**.

- **Guest panel:** Joint discussion with the speakers
- Chair closing comments
- Close





Prof. David Gillborn

Professor of Critical Race Studies,
Director of Research in the School
of Education

Deputy Director of the Centre for
Research in Race and Education
(CRRE) Uni. of Birmingham

Editor-in-chief of the journal Race
Ethnicity and Education,





David Gillborn

'Race'

'Racism': how you define it, shapes (in)action

Anti-Black racism

Change & Antiracism

“RACE”



...it is almost universally agreed that race is a social construct.

In 2005, only two years after the sequencing of the human genome, the editors of *Nature Biotechnology* put it like this: **‘Pooling people in race silos is akin to zoologists grouping raccoons, tigers, and okapis on the basis that they are all stripey.’**

Perhaps, then, the better question is: Why do we continue to search for a connection between race and genetics...



Racism: *now you see it, now you don't*



Traditional view of racism

Deficit oriented

An exceptional occurrence driven by crude race hatred.

Critical understanding of racism

Action oriented

Complex, subtle and extensive.
Racist acts can be well-intentioned.

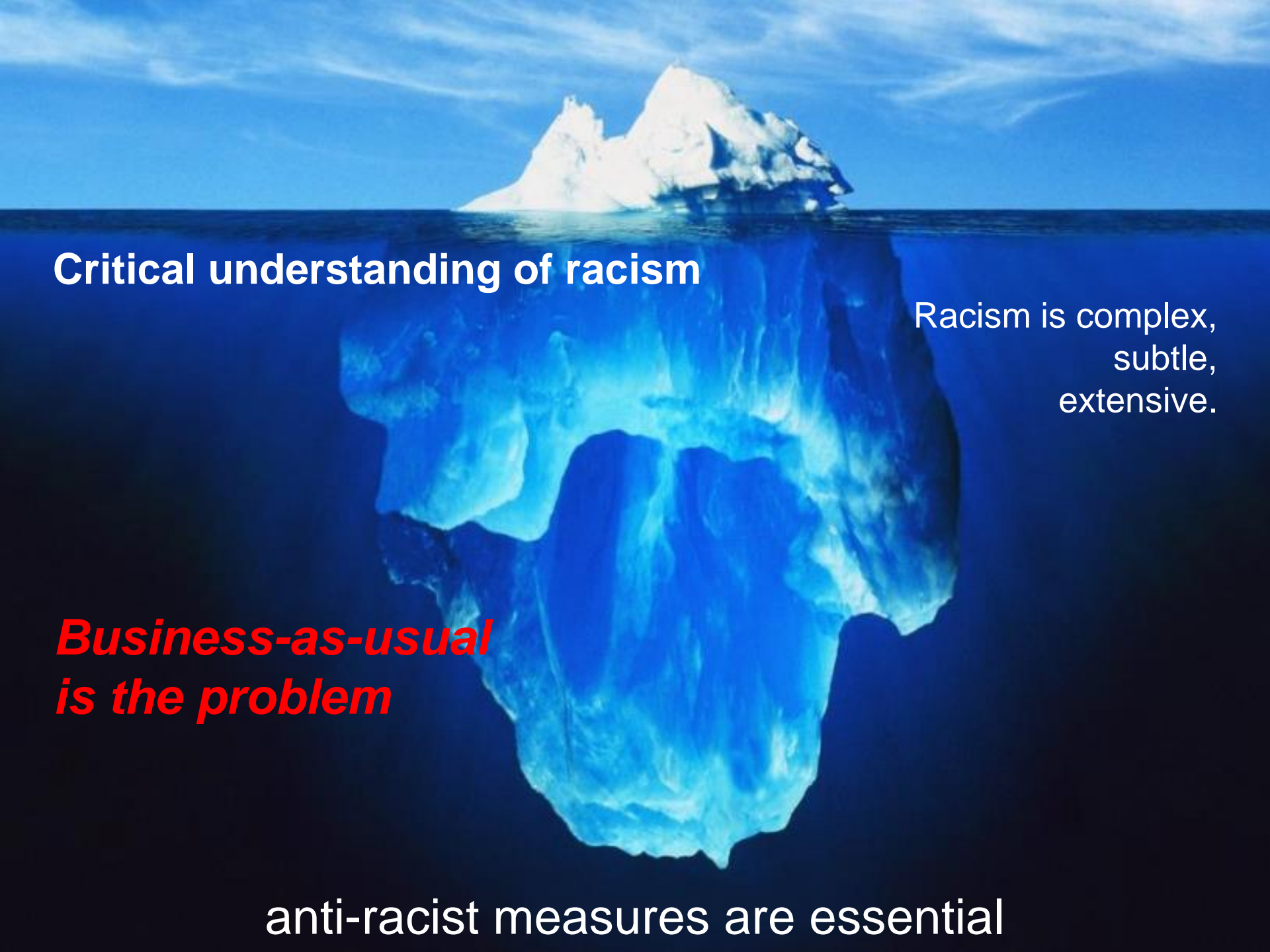


Racisms

- **Different groups are subject to different racist stereotypes**
- **Anti-Black racism is especially deep rooted**

characterized by

- low expectations,
- fear of threat,
- over-surveillance,
- more severe and more frequent disciplinary action



Critical understanding of racism

Racism is complex,
subtle,
extensive.

***Business-as-usual
is the problem***

anti-racist measures are essential



Hari Sewell

Director of HS Consultancy.

Specialist Guest Lecturer
(Collaborative Practice, AMHP),
University of Bradford.

Hon Senior Research Fellow,
Associate (Citizen and Community)
University of Central Lancashire



Panellist Question Time

- Joint discussion / Q&A



Close: Thank you!



Final Webinar! Follow Coproduce Care

Thank you everyone who took part, please stay in touch below:

[@coprocure](https://twitter.com/coprocure)

hi@coproducecare.com

www.coproducecare.com

NEW: Register Now for the Final Session

“A brave conversation about race and equality” **Monday
1st March from 10.30-12.15**

Details can be found on the SfC website: ‘BAME support’

**Plus: express interest for September’s New
Conversation!**

Thank you for joining!

